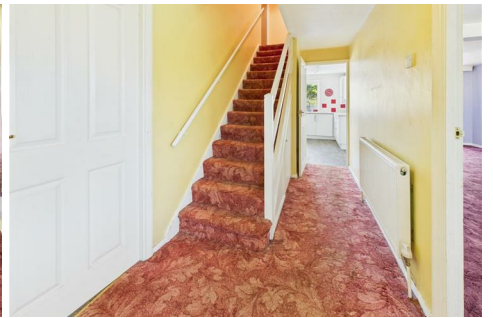


KILN & LODGE

ESTATE AGENTS : REDEFINED



52 St. Anthony's Drive, Chelmsford, CM2 9EJ

Situated in St. Anthony's Drive, Chelmsford, this charming house presents an excellent opportunity for families seeking a spacious and inviting home. With no chain involved, you can move in without delay and start creating lasting memories in this delightful property.

The house has two reception rooms, perfect for entertaining guests or enjoying quiet family evenings. The generous layout includes four sizeable bedrooms, providing ample space for family members or guests. The two bathrooms ensure convenience for busy mornings and offer a touch of comfort for all.

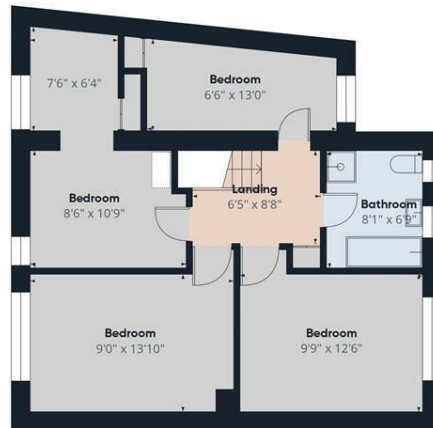
Set in a secluded location, this property offers a peaceful retreat from the hustle and bustle of everyday life, while still being conveniently close to local amenities and transport links. The potential for personalisation is vast, allowing you to transform this house into your dream family home.

Whether you are looking to settle down or invest in a property with great potential, this house on St. Anthony's Drive is a remarkable find. Don't miss the chance to make it your own.

- No Chain
- Generous Sized Bedrooms
- Good Layout
- Secluded Location
- Family Home
- Lots of Potential
- Extended Semi Detached Home
- Study and Utility Room
- Potential for off Road Parking (STP)
- Viewing Advised



Floor 0



Floor 1

Approximate total area[®]
1135 ft²

(1) Excluding balconies and terraces.

While every attempt has been made to ensure accuracy, all measurements are approximate, not to scale. This floor plan is for illustrative purposes only.

Calculations were based on RICS IPMS 3C standard. Please note that calculations were adjusted by a third party and therefore may not comply with RICS IPMS 3C.

GIRAFFE360

